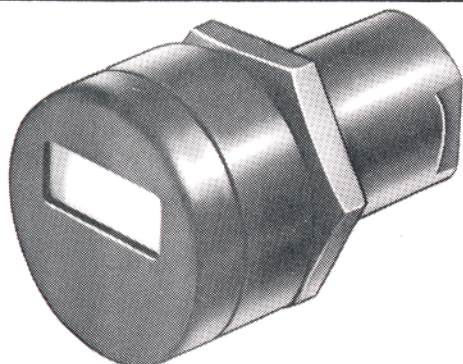


**PARTS LIST**  
**ARO PNEUMATIC LOGIC CONTROL**  
**LOGIC FUNCTION ASSEMBLY**

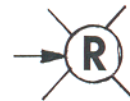
**MODEL 59073**  
**59107**

FORM 4506  
REV. 5-85

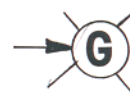
**PNEUMATIC INDICATOR**



**CIRCUIT SYMBOL:**  
(MODEL 59073)



**CIRCUIT SYMBOL:**  
(MODEL 59107)



The Pneumatic Indicator, like its electrical counterpart, the pilot light, is used for monitoring a signal. It can be connected to any control line in a circuit where ON-OFF indication is desired.

**OPERATING DESCRIPTION**

The flag is held in the retracted position by the return spring and cannot be seen in the window of the indicator face. When air pressure is applied to the input, the piston moves against the flag pivot and the red or green flag becomes visible in the window.

**OPERATING PRESSURE RANGE**

30 to 150 P.S.I.G.

**TEMPERATURE RANGE**

+32°F to +160°F

**INSTALLATION**

Pressure regulation is recommended for applications where optimum repeatability is required.

Lubrication is recommended.

Filtration is recommended to assure a clean, dry air supply.

**SERVICE**

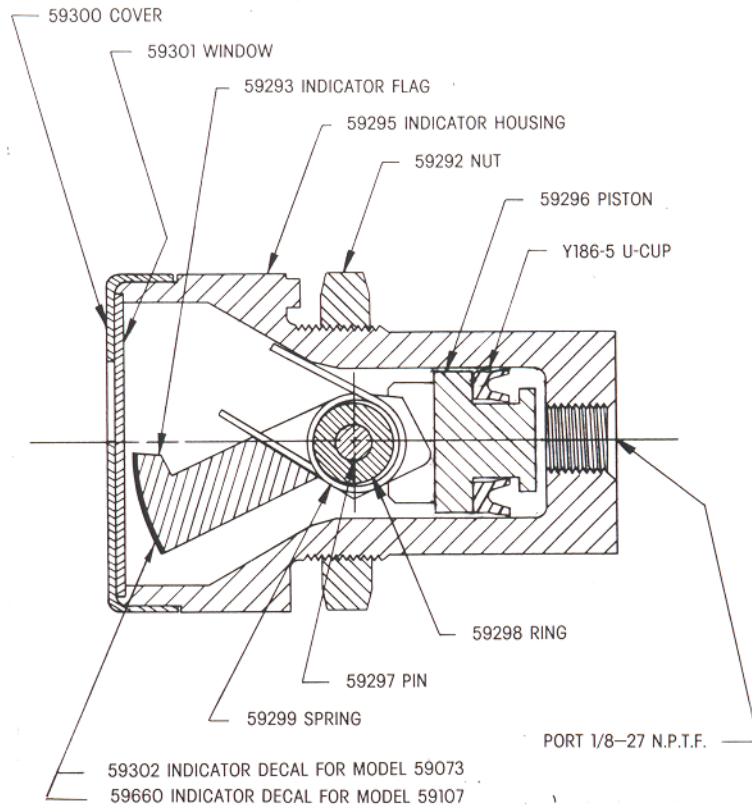
In the event of a malfunction:

- 1). If flag fails to appear in window when pressure is applied.  
Check Y186-5 U-cup for wear or rupture.  
Check inside diameter of 59295 housing for excessive wear or defects.  
Check 59293 flag for freedom of movement or binding.
- 2). If flag fails to retract when pressure is removed,  
Check 59299 spring for breakage.  
Check 59293 flag for freedom of movement or binding

**TESTING**

Apply pressure to input port, flag should become visible in the window. Remove pressure at input port and flag should disappear.

## PARTS LIST



## PANEL MOUNT DIMENSIONS

